

ETHERNET PLINT CAT.6A

490209

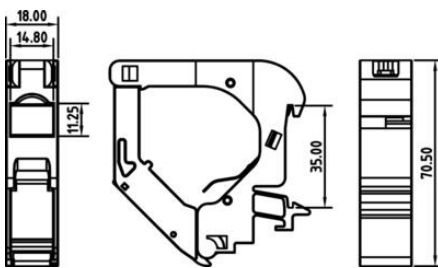
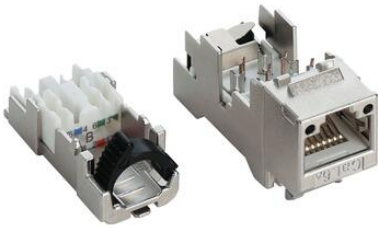
- 8-polet og 10 Gigabit overførsel
- IP20
- Temperatur -40 til 70 grader



PRODUKTBESKRIVELSE

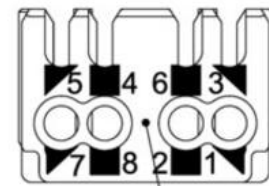
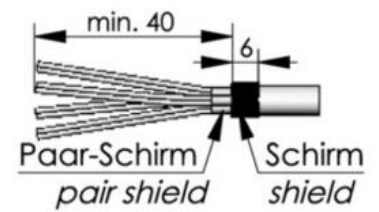
SPECIFIKATIONER

Antal poler	8
Bredde	18 mm
IP-klasse	IP20
Peak current	1 A
Spænding max	50 V
Temperaturområde fra	-40 °C
Temperaturområde lager fra	-40 °C
Temperaturområde lager til	70 °C
Temperaturområde til	70 °C
Tilslutning	IDC
Vægt	0,053 kg

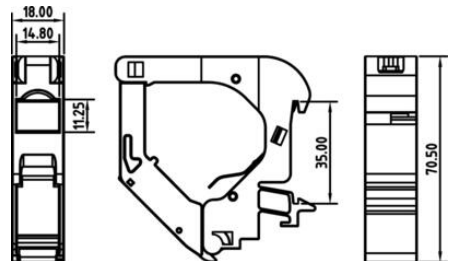


RJ45

	TIA 568A	TIA 568 B	Profinet
1	WHGN	WHOG	YE
2	GN	OG	OG
3	WHOG	WHGN	WH
4	BU	BU	-
5	WHBU	WHBU	-
6	OG	GN	BU
7	WHBR	WHBR	-
8	BR	BR	-

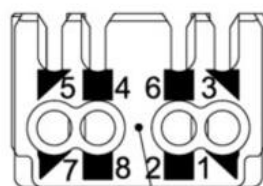
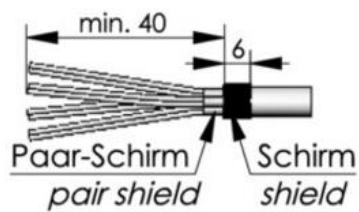


Anschluss
Connection



RJ45

	TIA 568A	TIA 568 B	Profinet
1	WHGN	WHOG	YE
2	GN	OG	OG
3	WHOG	WHGN	WH
4	BU	BU	-
5	WHBU	WHBU	-
6	OG	GN	BU
7	WHBR	WHBR	-
8	BR	BR	-



Anschluss
Connection