

BUBBLE-TIGHT, KOMPLET SYSTEM, PETROKEMI, LABORATORIE, HØJT TRYK

NA4 Changeover System

NA4

- Komplet System
- Gas delivery systems
- Petrochemical analyzer sampling systems
- Temperatur: -40°C til 74°C
- CV: 0.06



PRODUKTBESKRIVELSE

Tescom NA4 Changeover System:

NA4 Changeover panelerne er et komplet system som er designet til at sikre et vedvarende flow af gasser uden afbrydelser på linjen. De har et design burst tryk 150% af max trykket.

Features:

Max inlet tryk: 207 barg
 Max Outlet tryk: 103 barg
 Temperaturområde: -40°C op til 74°C
 CV Værdi: 0.06
 Op til 8 cylinder pr side (16 total)
 Messing eller Rustfri stål regulatorer
 Flexibel Shut-off ventil
 Mulighed for at skræderbygge
 Kan bruges både ved lavt og højt tryk
 Bubble-tight
 Messing eller 316 Rustfri stål cabinet

Komplet system:

kan blandt andet bestilles med:
 CGA tilslutninger
 Slanger
 Check Valve
 Purge Valve
 Pressure Switches
 Alarmer

Ideel til brug i:

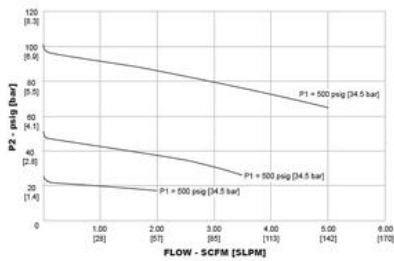
Petrokemisk analyserings sampling system
 Gas leverings systemer
 Laboratorier
 Welding gases

OBS ! Den viste pris er kun for "basic" enheden
 Kontakt vores produktspecialist for at finde den mest optimale løsning til dit behov.

;

SPECIFIKATIONER

Flow kapacitet	0,06 Cv
Lækrate	Bubble-tight
Materiale	Rustfri stål eller Messing
Max Inlet Pressure	207 bar
Max Outlet Pressure	103 bar
Serie	NA4
Temperaturområde fra	-40 °C
Temperaturområde til	74 °C
Tilslutning	1/4" NPTF
Type	Changeover System
Vægt	4,5 kg

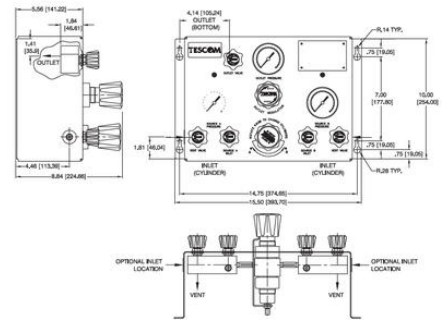


Example for selecting a part number:

NA4	1	6	2	1	1	0	0	5	4	6	4
NA4	1 - 1/4" NPTF	4 - 216 Stainless Steel	1 - 200 psig 200 bar	1 - Vent	1 - Vent	0 - None	0 - None	5 - Four channel remote mount solenoid valve with integral switch on panel	4 - None	6 - None	4 - Standard check valves (at inlet of panel)

NO.	OUTLET PRESSURE	CHANGEOVER RELAY	PRESSURE SWITCH SETTING	OUTLET GAUGE	RELIEF VALVE CRACK PRESSURE
C	0-20	150	200	60	45
B	0-20	270	200	60	45
1	0-50	270	200	100	90
2	0-100	270	200	200	150
3	0-150	270	200	200	225
4	0-200	270	200	200	225
5	0-200	450	500	600	300
6	0-200	450	500	600	450
7	0-500	780	370	1000	750
8	0-750	900	900	1500	1125
9	0-1000	1200	1200	2000	1500
0	0-1500	2000	2200	2800	2000

NO.	CONNECTION TYPE	PRESSURE SWITCH AND RELIEF VALVE O-RING	HOSE COIL MATERIAL	HOSE JACKET MATERIAL
0	3/4" CCA Flange, No Hose	N/A	N/A	N/A
1	1/4" Female End	Buna	Teflon®	Stainless Steel Braid
2	1/4" Female End	Buna	Nylon	Polyurethane
3	CCA 500 (Full-Port)	Buna	Nylon	Polyurethane
4	CCA 500 (High-Pressure)	Buna	Teflon®	Stainless Steel Braid
5	CCA 500 (High-Pressure)	Buna	Nylon	Polyurethane
6	CCA 500 (High-Pressure)	Buna	Teflon®	Stainless Steel Braid
7	1/2" (Full-Port)	Buna	Nylon	Polyurethane
8	1/2" (High-Pressure)	Buna	Teflon®	Stainless Steel Braid
9	1/2" (High-Pressure)	Buna	Nylon	Polyurethane
0	1/2" (High-Pressure)	Buna	Teflon®	Stainless Steel Braid
1	1/4" Female End	Buna	Stainless Steel	Stainless Steel Braid



All dimensions are reference & nominal. Metric (millimeter) equivalents are in brackets.

NA4 Series Typical Installations

