



## INTERAPP ALUMINIUMS GEARBOX

Til butterflyventiler

GB232-05

Aluminium polyurethan coated gearbox Topflange: F05-F07 Firkant: 11/14 mm DN: 32-40-50-65-80

- Materiale: aluminium, polyurethan coated
- Kan også leveres i rustfrit stål 1.4301 med tætningsgrad IP 68 og i GG25 med tætningsgrad IP 65 eller IP 68
- Mulighed for montering af tilbage- melder



### PRODUKTBEKRIVELSE

Håndbetjent gearkasse, med aluminiumshus og polyurethan belagt.  
Til brug for f.eks. InterApp's Desponia, Bianca eller Aquaria butterflyventiler.

Kontakt vores produktspecialist, for den mest optimale løsning, til netop dit behov

;

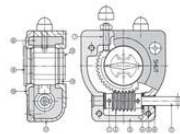
### SPECIFIKATIONER

Montering	EN ISO5211
Temperaturområde	-20C   +120C



#### Construction

1	Set screw	Steel 8.8
2	Worm	Steel C45
3	Coaxial	NBR
4	Needle bearing	
5	Plain bearing	Phenolic
6	Seal ring	Nitril
7	Shaft	Stainless steel
8	Gears	Multipurpose EP2
9	Position indicator	Polypropylene
10	Coverplate	Aluminium AL201
11	Body	Aluminium AL201
12	Insert	Sintered steel
13	Quadrant	GGG40

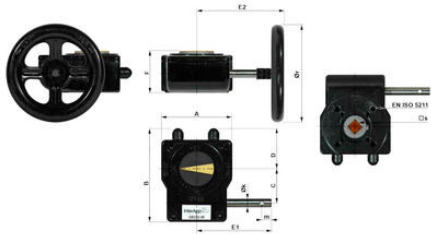


#### Type code

GB232-05 . F05-F07 . 14 . 100

Actuator size	GB232-05	125 Nm
	GB232-06	250 Nm
	GB232-08	500 Nm
	GB232-13	1000 Nm
	GB232-14	1500 Nm
Mounting face for valve	F05 - F04	according to EN ISO5211
Shaft connection	[mm]	Dimension of shaft connection
Handwheel diameter	[mm]	

Dimensions

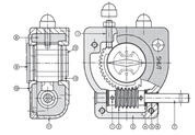


EN ISO5211	τ <sub>8</sub>	d <sub>r</sub>	Md max	A	B	C	D	E1	E2	F	G <sub>h</sub>	m	n*	Q <sub>2</sub>
GB232-05	F05-F07	11 / 14	150	80	114	42.5	48	105	121	53	12	14	10	0.8
		160	125 Nm											
GB232-06	F05-F07	14 / 17	160	80	114	42.5	48	155	179	59	12	14	10	0.9
		200	250 Nm											
GB232-08	F07-F10	17 / 22	200	100	131	50	56	170	209	67	12	14	0.25	1.55
		300	800 Nm											
GB232-13	F10-F12 / F14	22 / 27	400	175	209	80	83	280	375	84	20	24	10	5.4
		500	725 Nm											
GB232-14	F10-F12 / F14	22 / 27 / Ø45	600	175	209	80	83	280	396	84	20	24	10	5.4
		800	1000 Nm											
			900											
			1200 Nm											
			1440 Nm											
			1500 Nm											

\* n = Handwheel turns ON/OFF

Construction

1	Set screw	Steel B8
2	Worm	Steel C45
3	Gasket	NBR
4	Handle bearing	
5	Plain bearing	Pernaxide
6	Seal ring	Nitril
7	Shaft	Stainless steel
8	Grease	Multipurpose EP2
9	Position indicator	Polycarbonate
10	Coverplate	Aluminium AL201
11	Body	Aluminium AL201
12	Insert	Stainless steel
13	Quadrant	GGG40



Type code

GB232-05 . F05-F07 . 14 . 160	
Actuator size	GB232-05 GB232-06 GB232-08 GB232-13 GB232-14
Mounting face for valve	F05 - F14 according to EN ISO5211
Shaft connection	[mm] Dimension of shaft connection
Handwheel diameter	[mm]

Dimensions



EN ISO5211	τ <sub>8</sub>	d <sub>r</sub>	Md max	A	B	C	D	E1	E2	F	G <sub>h</sub>	m	n*	Q <sub>2</sub>
GB232-05	F05-F07	11 / 14	150	80	114	42.5	48	105	121	53	12	14	10	0.8
		160	125 Nm											
GB232-06	F05-F07	14 / 17	160	80	114	42.5	48	155	179	59	12	14	10	0.9
		200	250 Nm											
GB232-08	F07-F10	17 / 22	200	100	131	50	56	170	209	67	12	14	0.25	1.55
		300	800 Nm											
GB232-13	F10-F12 / F14	22 / 27	400	175	209	80	83	280	375	84	20	24	10	5.4
		500	725 Nm											
GB232-14	F10-F12 / F14	22 / 27 / Ø45	600	175	209	80	83	280	396	84	20	24	10	5.4
		800	1000 Nm											
			900											
			1200 Nm											
			1440 Nm											
			1500 Nm											

\* n = Handwheel turns ON/OFF